

Greenhill News



'Working Together'

September 2020

Teaching Structure 2019-2020

Reception : Mrs S Ward and Mrs V Lee

Year 1 – Miss R Sawley

Year 1 / 2 – Mrs S Burns

Year 2 – Miss S Wright

Year 3 – Mr M Maguire

Year 4 – Miss N Eustice

Year 5 – Mr R Ahmed-Swift

Year 6 – Mrs K O'Malley

PPA – Mrs A Carrick

Deputy Headteacher – Mr J Artley

Headteacher – Mr S Crosier

Welcome back !

We would like to welcome everyone to the new school year at Greenhill

Primary, we are excited to be back open after the enforced closure of schools last term.

We continue to be impacted by coronavirus restrictions and as part of our risk assessments have a range of new operating procedures that will continue to be reviewed and when needed adapted as the year progresses.

We thank you in advance for your support and cooperation during this time.

S Crosier
(Headteacher)



The school office

We are asking all our parents to contact the school office by telephone or email.

Please try to avoid the office reception area.

Any visitors who enter the school building must wear face coverings.

Parking around school

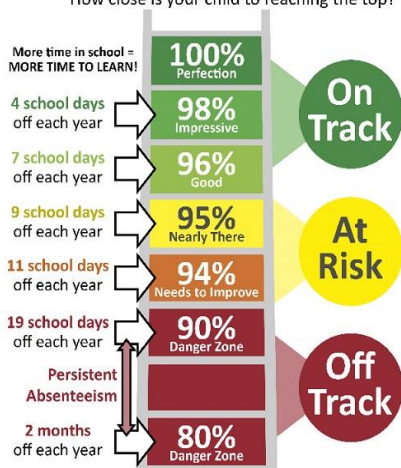
At the start of each new school year we remind everybody about parking safely around school.

This year, safe parking is even more important as we return to school after the extended closure. Please avoid parking on the yellow lines around the school site.

Help support us as we try to keep all of our children safe at school

Attendance Ladder

How close is your child to reaching the top?



TERM DATES

School closes for half-term at 3.30pm on Thursday 22nd October.

We re-open on Monday 2nd November.

Term dates can be viewed on our school website.



Staffing News

At the start of the new school year we have a few changes to our staffing profile.

We welcome Mrs O'Malley (Year 6), Mr Ahmed-Swift (Year 5) and Mr Ryan (EYFS) to our teaching team.

Miss Ellis and Mrs Fitton join our Teaching Assistant team.

A SCHOOL WITH VALUES AT THE HEART OF ALL WE DO

DETERMINATION *RESPECT* *RESPONSIBILITY* *EXCELLENCE* *CO-OPERATION* *HONESTY*



NUT FREE SCHOOL

One of our new starters has a significant nut allergy.

In response to this we are operating a 'nut free school policy'. Please ensure any packed lunches / morning snacks brought to school do not contain nut products.

Diary dates – Sep/Oct

For all the latest diary dates, please check the school website.

ARE YOUR CONTACT DETAILS UP TO DATE?

At the start of a new school year, we are asking parents to check that we have the correct contact details ie. address/telephone numbers/email for our records.

Also any changes to pupil's medical records ie allergies/ illnesses that may need amending.

TOP OF THE CLASS

Each month our newsletter will report on our class attendance figures.

Our target for attendance this year remains 97.0%

Please support us to achieve this by ensuring your child is in school on time, every single day.

GROWTH MINDSET

We are encouraging our pupils to become resilient, risk taking, 'have a go' learners.



MINDSET is everything.
What you think you become.



School Bubbles

We are currently operating in four school bubbles ; **EYFS** (Reception class), **Key Stage 1** (Year 1, 1/2 and 2), **Lower Key Stage 2** (Year3 and 4) and **Upper Key Stage 2** (Year 5 and 6).

By operating in four bubbles, we have been able to restart OSCARS childcare and safely supervise our pupils with our current staffing levels.



www.greenhillprimary.co.uk

School Dinners

The cost of school dinners remains at £2.30 a day (£11.50 per week).

All Reception and KS1 children are eligible for a free lunch.

Lunchtimes have been adapted to ensure our school bubbles do not mix.

Currently we are only providing hot dinners for our Reception pupils, we hope to be able to return to our normal lunchtime service as the school year progresses.

HELP US TO HELP YOU

Please can you ensure that all school uniform is labelled with your child's name and class.

Every year we end up with lost uniform that is very difficult to reunite with the correct children.

Thank you 😊

Drop off and collection times

We are operating staggered drop off and collection times that will be reviewed on a regular basis.

Please ensure you do not arrive earlier or later than the allocated time for your children.

If we find playgrounds are becoming too congested, then our routines will be revised further.

Please observe social distancing if you enter the playground.