

Greenhill News



'Working Together'

October 2020

Attendance rates

3rd September – 14th October

Reception : 98.9%

Year 1 : 98.9%

Year 1 / 2 : 98.7%

Year 2 : 99.1%

Year 3 : 95.8%

Year 4 : 98.5%

Year 5 : 97.7%

Year 6 : 98.1%

Overall : 98.1%

This exceeds our target of 97% and is a fantastic start to the new school year.

Well done everyone 😊

Thank you !

I would like to use this opportunity to thank our school community for the support and co-operation displayed at the start of the school year.

Changes to our normal routines are now becoming more familiar and the children are settling into school well, enjoying their learning and demonstrating our school values of responsibility and co-operation in their behaviour in school.

Stay safe.

S Crozier
(Headteacher)



The school office

We are continuing to ask parents to contact the school office by telephone or email.

Please try to avoid the office reception area.

Any visitors who enter the school site must wear face coverings.

Thank you for your understanding.

School photographs

John Hunt photographers will be taking individual school photos in school on 20th November.

Due to current restrictions, we will not be able to offer family group / sibling photos this year.

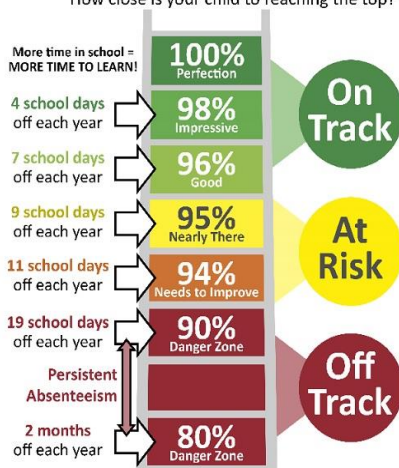
Staffing News

Mr Maguire has been appointed to a new position in another school in Bury. Staff and governors thank him for his work at Greenhill and wish him well in his new role.

Miss J Stansfield has been appointed to lead our Year 3 class from 2nd November. She has previously taught in Bolton and Oldham and we welcome her to the Greenhill teaching team.

Attendance Ladder

How close is your child to reaching the top?



TERM DATES

School closes for half-term at 3.30pm on Thursday 22nd October.

We re-open on Monday 2nd November.

Term dates can be viewed on our school website.



A SCHOOL WITH VALUES AT THE HEART OF ALL WE DO

DETERMINATION *RESPECT* *RESPONSIBILITY* *EXCELLENCE* *CO-OPERATION* *HONESTY*



NUT FREE SCHOOL

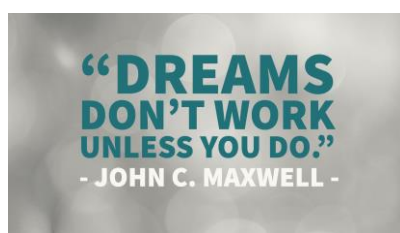
Just a reminder...

In response to this we are operating a 'nut free school policy'. Please ensure any packed lunches / morning snacks brought to school do not contain nut products.

Diary dates – Sep/Oct

For all the latest diary dates, please check the school website.

GROWTH MINDSET



School Bubbles

We are currently operating in four school bubbles ; **EYFS** (Reception class), **Key Stage 1** (Year 1, 1/2 and 2), **Lower Key Stage 2** (Year3 and 4) and **Upper Key Stage 2** (Year 5 and 6).

By operating in four bubbles, we have been able to restart OSCARS childcare and safely supervise our pupils with our current staffing levels.



www.greenhillprimary.co.uk

School Dinners

The cost of school dinners remains at £2.30 a day (£11.50 per week).

All Reception and KS1 children are eligible for a free lunch.

Lunchtimes have been adapted to ensure our school bubbles do not mix.

We are now serving hot dinners to all our classes and the transition back to hot dinners has been successful.

HELP US TO HELP YOU

Please can you ensure that all school uniform is labelled with your child's name and class.

Every year we end up with lost uniform that is very difficult to reunite with the correct children.

Thank you 😊

Drop off and collection times

We continue to stagger our drop off and collection times that will continue to be reviewed as required.

Please ensure you do not arrive earlier or later than the allocated time for your children.

Please remember to wear face coverings on the playground.

Please observe social distancing if you enter the playground.

TOP OF THE CLASS

Each month our newsletter will report on our class attendance figures.

Our target for attendance this year remains 97.0%

Please support us to achieve this by ensuring your child is in school on time, every single day.

ARE YOUR CONTACT DETAILS UP TO DATE?

At the start of a new school year, we are asking parents to check that we have the correct contact details ie. address/telephone numbers/email for our records.

Also any changes to pupil's medical records ie allergies/ illnesses that may need amending.