

Greenhill News



'Working Together'

March 2020

WINTER SCHOOL CLOSURES

We always try to keep school open during the winter months.

In extreme weather there can be occasional times when school closures are made due to Health and Safety concerns.

At Greenhill Primary School all school closures are notified to local radio and reported on the school website and through our Facebook page.



Parents' evening



PARENTS EVENINGS

We are holding our Spring Term parents evenings later this month.

For Reception to Year 5 these will be taking place on **Tuesday 24th March** and **Thursday 26th March**, between 3.30pm and 7pm.

Year 6 will be earlier in the term on **Monday 2nd March** and **Tuesday 3rd March**.

Booking will be available via Arbor two weeks prior to the meetings.

PARKING AROUND SCHOOL

We continue to try to be vigilant in terms of reminding parents about parking safely and considerately around school.

Unfortunately, there seems to be a small minority that continue to disregard our concerns.

Thank you to everybody else who does **respect** the safety of our pupils and who recognise the dangers of unsafe and illegal parking.

Health and Safety

Just a reminder that the play equipment in the school playground **is for use during the school day** when school staff are supervising playtime and lunchtime breaks

School are not responsible for supervising children on the playground before the start of the school day (8.50am) or after the end of the school day (3.30pm) and we do not accept liability for any accidents that occur outside of the school day.

If children are on this equipment at these times they must be supervised by a parent / Carer who is taking responsibility for their child's safety and the appropriate use of the play equipment.

Park safely
Park legally
Park considerately

Consider walking part of the way to school or share the school run with other parents

... meaning fewer cars at the school entrance

... making it safer for you and your children.

TERM DATES

School closes for the Easter holiday at 3.30pm on Friday 3rd April 2020.

We re-open at 8.50am on Monday 20th April 2020.

LOST PROPERTY

Please could you ensure all items of pupil clothing are labelled / marked with either pupil names or initials.

We **STILL** have a lot of lost property that is 'nameless' and therefore very difficult to return if misplaced.



A SCHOOL WITH VALUES AT THE HEART OF ALL WE DO

DETERMINATION* *RESPECT* *RESPONSIBILITY* *EXCELLENCE* *CO-OPERATION* *HONESTY



Year 4 swimming lessons

Year 4 swimming lessons continue this Friday afternoon and will be every week until 3rd April between 2pm and 3pm.

PUPIL PARLIAMENT EVENT

Our Pupil Parliament have been invited to a School's Parliament event at Gorsefield Primary on Wednesday 11th March.

SRE Parental Consultation

As part of the changes to the PSHE curriculum, schools are required to consult with parents about the Sex and Relationship Education (SRE) element of the school curriculum.

Our PSHE lead, Mrs Burns has arranged a **meeting for parents at 4pm on Thursday 12th March.**

Please come along and find out more about our PSHE curriculum at Greenhill.

Volunteering at Greenhill!

We are still looking for volunteers who can offer time to support different aspects of school life.

If you are interested in **volunteering** at Greenhill, please have a chat to the office staff, Mr Crosier or Mr Artley.



Diary dates – March 2020

- Mon 2nd Mar – Y6 Parents Evening
- Tue 3rd Mar – Y6 Parents Evening
- Thu 5th Mar – FROGS meeting 7pm
- Thu 12th Mar – SRE parents meeting
- Tue 24th Mar – Parents Evening
- Thu 26th Mar – Parents Evening
- Mon 30th Mar – Greenhill choir @ Whitefield Methodist Church

Please check the website and facebook pages for regular updates

Academy consultation

Thank you to everybody who has emailed school and completed the online survey as part of the process of consultation about Greenhill Primary considering joining Forward As One Multi-Academy Trust.

Governors are scheduled to meet again soon to discuss feedback from parents received during the consultation.

READING AT HOME

Could we remind all pupils that **reading at home** is one of our **expectations** in terms of home learning.

We have observed that more pupils in Key Stage 2 are spending time in 'fix-it' as they are not reading at home.

STAFFING NEWS

Mrs Smith our School Business Manager left Greenhill before half-term.

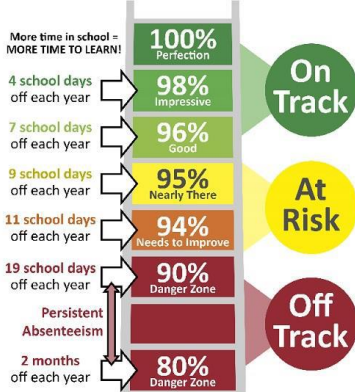
The Governors and staff of Greenhill wish her well in the future.



www.greenhillprimary.co.uk

Attendance Ladder

How close is your child to reaching the top?



Attendance (September - February)

Attendance rates up to Friday 28th February.

- Reception : 95.5%
- Year 1 : 97.0%
- Year 1/2 97.2%
- Year 2 : 94.6%
- Year 3 : 97.0%
- Year 4 : 97.2 %
- Year 5 : 97.0%
- Year 6 : 97.0%
- Overall : 96.6%
- School target : 97%